

GraviCon 3000 CP-D

Volumetric dosing unit for poorly flowing material

Volumetric dosing units of the CP-D series are especially designed for extrusion and allow the conveying of poorly flowing materials as pellets, mill material, powder, calcium carbonate, dry-blend mixtures, etc..

The housings have a solid design and are made of stainless steel No. 1.4301. The conveying spirals are exchangeable and can be adapted to material type and feed rate.

Due to a special sealing and positioning of conveying 2 spirals towards drive motor, material leakage at drive side of drive motor is not possible.

The unit allows quick and easy disassembling and cleaning. For this process the drive component including 2 spirals can be moved outside the housing.

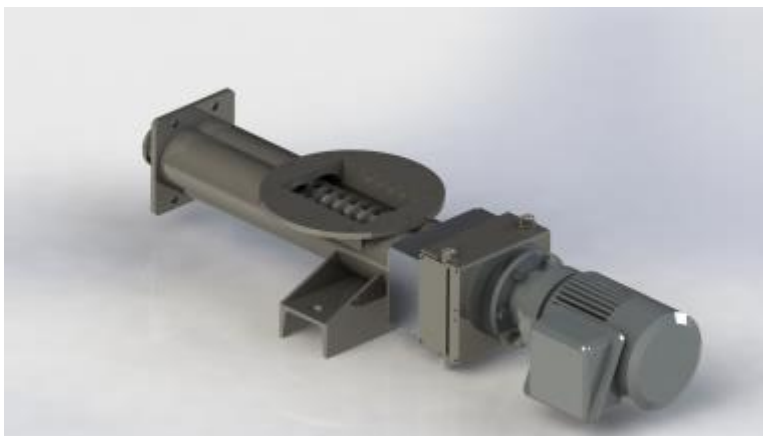
AC motors are generally equipped with separate frequency converter (speed control range 1:30).

The conveying capacity of the device depends on

- Material form and graining
- Specific weight of material
- Dimensional weight of material
- Surface structure of material

Features

- Simple mechanical design
- Nearly 100% screw filling level
- Recipe changing without tools
- Low maintenance
- External motor – no bulk material heating
- High throughput range
- Excellent price/performance ratio



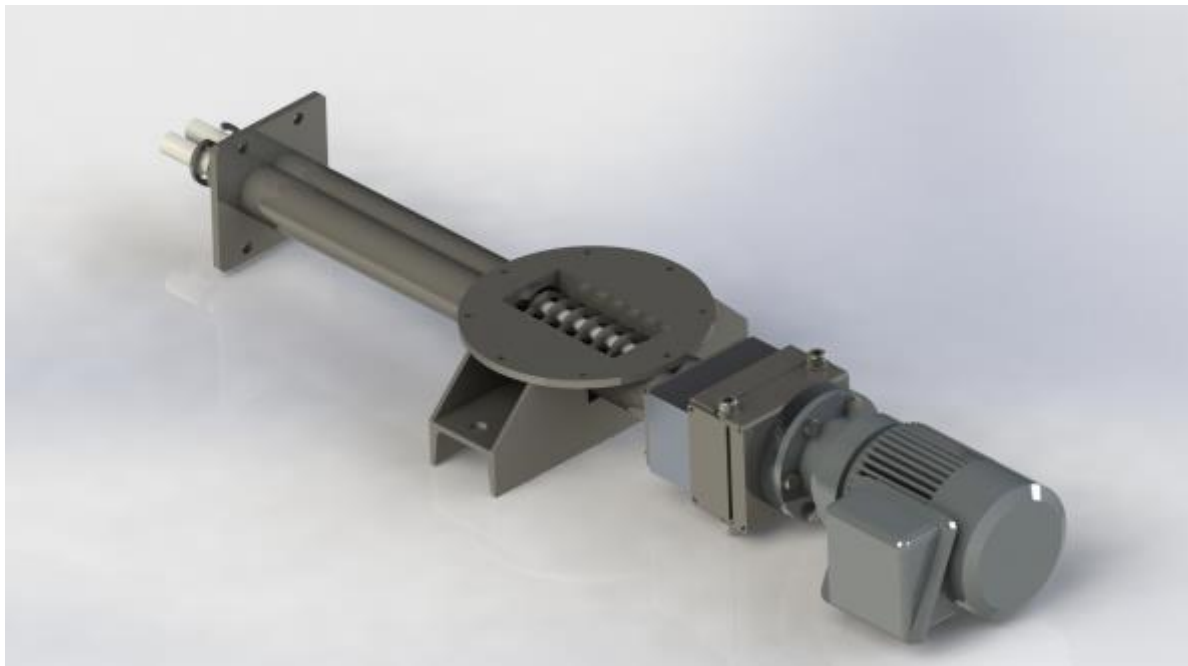
Product range:

Type of device	Throughput* min. / max.
GraviCon 3000 CP-D10	0,4 – 20 kg/h
GraviCon 3000 CP-D20	5 – 50 kg/h
GraviCon 3000 CP-D30	5 – 150 kg/h
GraviCon 3000 CP-D42	10 – 300 kg/h
GraviCon 3000 CP-D60	10 – 500 kg/h
GraviCon 3000 CP-D100	10 – 1500 kg/h

*** Material: PVC mill feed, apparent density up to 830 g/L**

All dosing units of the CP series are available on request with required machine funnel incl. inspection window and cover. Design and construction depend on material volume and available space on site.

Example: "GraviCon CPD-U42-U"



Application:
Lining of dosing systems