

# S/M-KTW-FS

## Weighing and dosing of poorly flowing materials

**The I-KTW-FS is a module of poorly flowing material as scrap, fibre materials, grit, powder and pellets.**

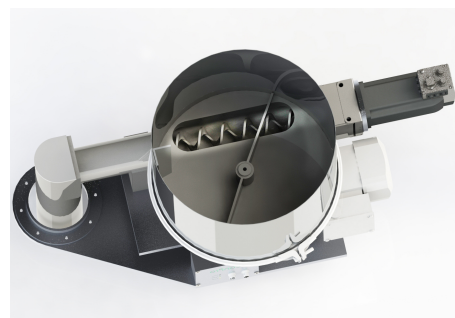


Especially new materials can not be processed with conventional weighing systems. The increasing use of WPC (wood plastic composites), recycled materials and other poorly flowing materials with high apparent density fluctuations resulted in the development of the S/M-KTW-FS funnel weigher. In particular with the integration in the ConPro gravimetric systems it offers the possibility of quick compensation of apparent density fluctuations which are a natural feature of the above mentioned materials. The processed raw materials as stainless steel/ aluminium or the AC motors supports that the system is designed for durability.

For weighing and dosing of materials it is necessary to keep the material output constant. The S/M-KTW-FS has been developed in order to assure constant output for poorly flowing materials. An integrated agitator avoids bridge forming and provides a permanently filled dosing screw. The unit weight is calculated via a platform load cell. Via weight reduction values the throughput is calculated and controlled.

### Special features

- Easy mechanical assembly
- Low in wear and maintenance
- Large throughput range
- Excellent cost/ performance ratio



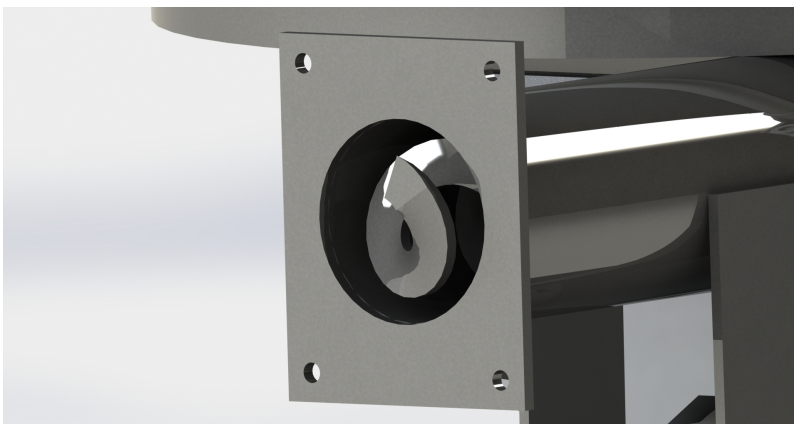
## **Product range:**

<b>Type of device</b>	<b>Dosing device type</b>	<b>Throughput* min. / max.</b>
<b>S/M-KTW – FS20</b>	CP-H 30	ca. 10 – 100 Kg/h
<b>S/M-KTW – FS40</b>	CP-H 42	ca. 10 – 250 Kg/h
<b>S/M-KTW – FS60</b>	CP-H 42	ca. 10 – 500 Kg/h
<b>S/M-KTW – FS80</b>	CP-H 42	ca. 10 – 750 Kg/h
<b>S/M-KTW – FS120</b>	CP-H 60	ca. 10 – 1000 Kg/h
<b>S/M-KTW – FS150</b>	CP-H 60	ca. 10 – 1500 Kg/h
<b>S/M-KTW – FS200</b>	CP-H 100	ca. 10 – 2000 Kg/h
<b>S/M-KTW – FS250</b>	CP-H 100	ca. 10 – 2500 Kg/h

\* **Material: powder, apparent density up to 200 - 300 g/l**

### **Example:**

Stand-alone device „**GraviCon CPH 42**“  
incl. material storage container & operating  
station (photo incl. weighing technology, optional)



### **Application:**

Wood profil